

J.L.G.  
DRAWN BY:  
H.A.K.  
CHECKED BY:  
H.A.K.  
APPROVED BY:  
OCTOBER 2009  
DATE:

REVISIONS  
MAY 2, 2012  
JANUARY 24, 2019

PLAT OF 3.434 ACRES,  
BEING LOT 7, BLOCK 1, NEW CITY BLOCK 17184,  
COKER CEMETERY ESTABLISHED 1857,  
PLAT RECORDED IN VOLUME 9567, PAGE 130,  
CITY OF SAN ANTONIO,  
BEXAR COUNTY, TEXAS.

**H.A. KUEHLEM**  
PROFESSIONAL SURVEYORS  
A Brelviere Company  
14350 NORTHBROOK DRIVE SUITE 130  
SAN ANTONIO, TEXAS 78232  
PH: (210) 490-7847 FAX: (210) 490-7857  
FIRM REGISTRATION NO. 10059500

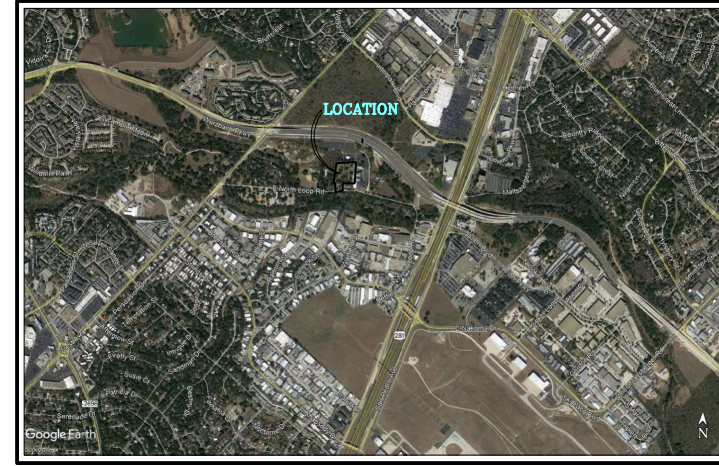


SHEET: **1**  
OF: **5**



SCALE: 1" = 30'

VICINITY MAP  
N.T.S.



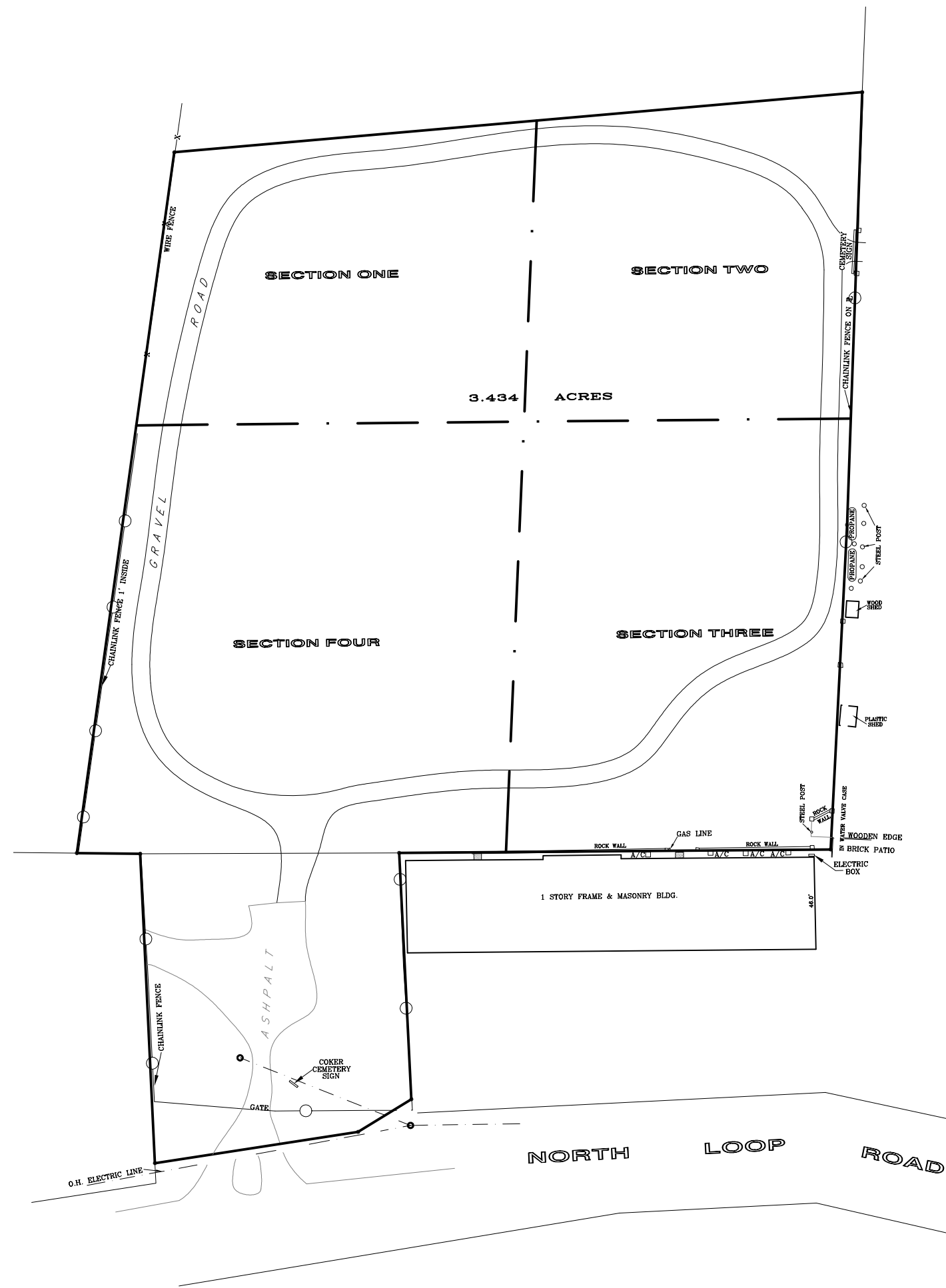
TYPICAL  
48' X 48' GRID DETAIL  
GRAVE SITES ARE 4' X 8'

1	2	3	4	5	6	7	8	9	10	11	12
13	14	15	16	17	18	19	20	21	22	23	24
25	26	27	28	29	30	31	32	33	34	35	36
37	38	39	40	41	42	43	44	45	46	47	48
49	50	51	52	53	54	55	56	57	58	59	60
61	62	63	64	65	66	67	68	69	70	71	72

ALUMINUM DISK ON IRON PIN  
WITH PUNCH MARK

TYPICAL LEGEND

- PLOT MARKER
- HOSE BIBB
- CONCRETE CURB
- 48'X48' GRID CORNERS
- FOOTSTONE
- HEADSTONE
- ROCK FOR HEADSTONE
- IRON FENCE
- CONCRETE
- HISTORICAL MARKER
- RESERVED PLOT
- UNKNOWN GRAVE



*H.A.K.*  
HENRY A. KUEHLEM  
REGISTERED PROFESSIONAL LAND SURVEYOR  
NO. 4020